

GEORGE L. EGBERT INTERMEDIATE SCHOOL IS 2

2020-2021 BLENDED INSTRUCTION EXPECTATIONS



BLENDDED PROGRAM

- **The Blended program will begin on Thursday October 1, 2020**
- **We are following the same calendar that posted on the website www.egbertintermediateschool.org**
 - **October 1st – First day In-Person Learning for Group B**
 - **October 2nd – First day In-Person Learning for Group C**
 - **October 5th – In-Person Learning for Group C**
 - **October 6th – First day In-Person Learning for Group A**

MESSAGE FROM THE PRINCIPAL

ADRIENNE STALLONE

Dear Parents/Guardians,

I am writing to ask you for your cooperation with regard to remote teaching and learning. Since the concept of learning through technology is in our profession to stay, it is important that we all remember that etiquette and appropriateness while learning online is important.

When your children are learning remotely, the teacher's role is to create a virtual classroom. Although we understand that parents and family members at times may be in the background to supervise and support young children, you cannot participate in any way during the lessons. During instructional time, students must ask questions in the manner established by the teacher. Thus, you cannot ask questions on behalf of your children or interrupt instruction in any way, including commenting in the chat, during live instruction.

Communication and trust between teachers and parents is at the heart of what makes this school the success that it is. Just as you trust us to care for and educate the children in person, we expect you to have that same level of trust while teachers are conducting their lessons remotely. Thus, please do not interfere with the instructional process as students engage with their teacher. We appreciate your support and assistance in ensuring appropriate use of our technology by you, our students, and our staff while participating in remote education.

We have established specific designated times for parents to ask teachers questions during "Office Hours" from 1:45PM until 2:05 PM. Teachers are available during weekly "office hours", formerly called parent engagement time, to address parent questions and or concerns.

Thank you for your cooperation.

Sincerely,

Adrienne Stallone

Principal

WHAT TO EXPECT?

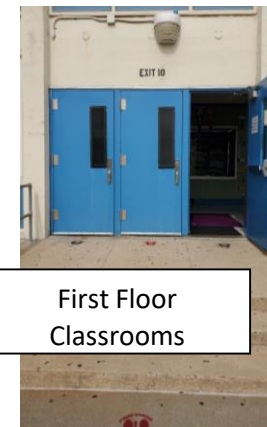
- Please discuss with your child the importance of social distancing and wearing a mask.
 - Face shields cannot be worn in place of a mask
 - Bandanas and Gaiters are not permitted as an appropriate covering – these are not CDC approved because they cannot be secured under the chin
 - Face covering with an exhalation valve or vent cannot be used on school property – as they allow unfiltered air to escape to others
 - The school will have extra masks available if your child forgets their mask.
 - Social Distancing markers have been placed throughout the school building on floors and in hallways
 - All desks have been arranged to adhere to the 6 feet rule
 - Hand Sanitizer is available in all classrooms
 - The maximum number of occupancy signs have been placed on the doors of every utilized space
 - PPE (masks, gowns, cleaning products, etc.) are in the school building
 - The entire school will be sanitized throughout the day and every evening
 - Students will be picking up breakfast and lunch upon entering the building and will eat them in the classroom during their designated period.



MORNING ARRIVAL



- Before leaving home:
 - Parents/Guardians are to complete wellness checks on their child each morning including temperature checks
 - All students are to complete the health screening prior to morning arrival
<https://healthscreening.schools.nyc>
 - Students will be required to show the screening either from the cell phones or bring a print out. PHONES ARE TO BE TURNED OFF AND PLACED IN THEIR BACKPACKS UPON ENTERING THE BUILDING.
 - There will be random temperature screenings
- Staggered arrival days and entrances (Cohort A, Cohort B and Cohort C - 8:15 AM Arrival)
 - Students will be given a color coded tag with their cohort information that is to be worn each day they attend school
 - Students will stand on the socially distant markers located around the school building
 - Students will be entering through their designated doors
 - First Floor Classrooms will enter through Exit 10 through the right hand door
 - Second Floor Classrooms will enter through Exit 8
 - Third Floor Classrooms will enter through Exit 10 through the left hand door



First Floor
Classrooms



Second Floor
Classrooms



Third Floor
Classrooms

DISMISSAL

ONCE STUDENTS ARE DISMISSED THEY ARE TO LEAVE THE SCHOOL PREMISES TO MAINTAIN SOCIAL DISTANCING WHILE THE REMAINDER OF THE SCHOOL IS BEING DISMISSED

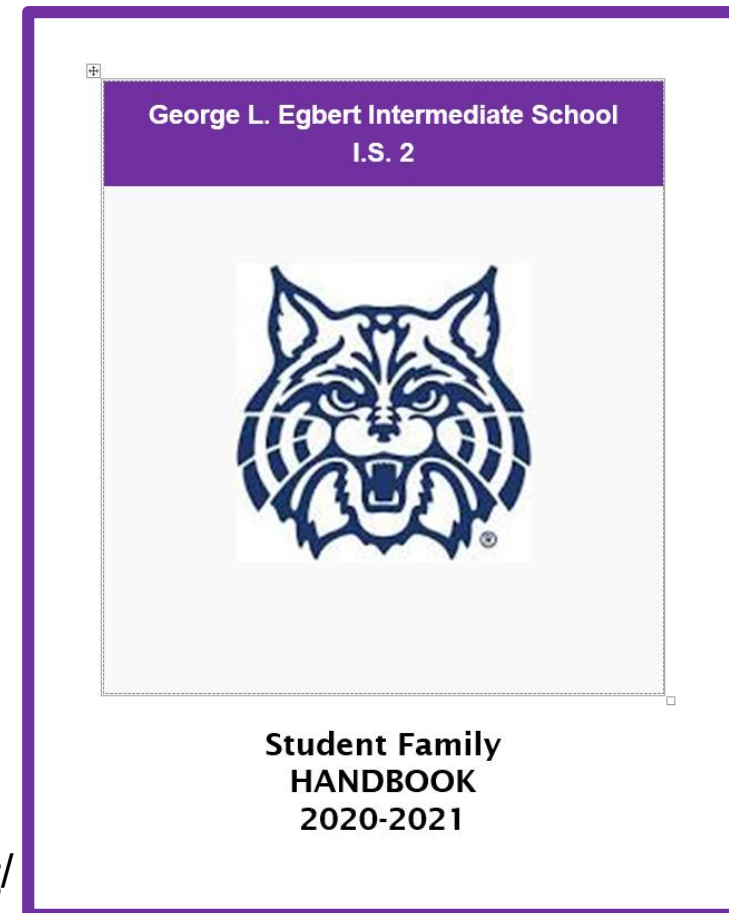
- Third Floor Classrooms will be dismissed at 1:43 pm from their classroom escorted by their teacher and paraprofessionals down through the first floor exits on Midland Avenue
 - Rooms 301, 302, 303, 304 and 306 – Exit 12 Staircase G (Midland Ave)
 - Rooms 305, 309, 310, 311 and 312 – Exit 13 Staircase A (Midland Ave)
 - Rooms 315, 317, 319, 321 and 323 – Exit 2 Staircase B (Midland Ave)
- Second Floor will be dismissed at 1:44 pm from their classroom escorted by their teacher and paraprofessionals down through the first floor exits on Midland Ave and Bedford Ave
 - Rooms 201, 202, 203, and 204 – Exit 12 Staircase G (Midland Ave)
 - Rooms 207, 210, 211B, and 212-Exit 13 Staircase A (Midland Ave)
 - Rooms 219, 221, 223, 225, and 227 - Exit 2 Staircase B (Midland Ave)
 - Rooms 229, 233, 235, 237, 238, 239 and 241 - Exit 3 Staircase D (Bedford Ave)
- First Floor will be dismissed at 1:45 pm from their classroom escorted by their teacher and paraprofessionals down through the first floor exits on Midland Avenue
 - Rooms 109, 110b, and 112 - Exit 13 Staircase A (Midland Ave)
 - Rooms 133A, 113B, and 115 – Exit 1 Main Entrance (Midland Avenue)
 - Rooms 119, 121, 123 and 127 - Exit 2 Staircase B (Midland Ave)

GEORGE L. EGBERT INTERMEDIATE SCHOOL I.S. 2

STUDENT FAMILY HANDBOOK

**Keep up to date with
communication,
Important student information,
and technology at
George L. Egbert Intermediate
School
I.S. 2 through
our Student Family Handbook**

Can be found on our website
<https://www.egbertintermediateschool.org/>



HEALTH SCREENING

HTTPS://HEALTHSCREENING.SCHOOLS.NYC/

NYC Department of Education

Health Screening

Select a Language

Health Screening
DOE Buildings

All DOE employees, students, families, and visitors seeking to enter DOE buildings must complete a health screening before entering DOE facilities. This health screening must be completed on each day of arrival and results will reset at midnight of each day. Upon entering the facility you will be asked to provide the results of your screening either by showing your phone or a printout of the results.

DOE Employees and Students

Sign In

Don't have a sign in?
(Students, Families and Visitors)

Guest Screening

Add this tool to your phone.

Add this tool to your phone by click here

Click here to fill out the guest screening

Click on **student** for health screening.
First Name, Last Name, I.S. R002 George L. Egbert (R002)

Hello Guest

☒ I'm a Student ☐ I'm a Visitor or a Family Member

First Name Last Name

Email

School or Facility You're Entering ☐ Other

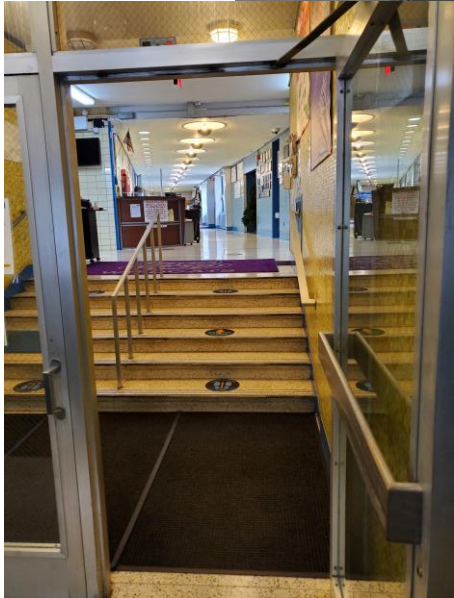
I.S. R002 George L. Egbert (R002)

Floor

Fill Out Daily Screening

SOCIAL DISTANCING

Students will follow the social distancing footsteps to enter and exit the school building



Classroom desks are placed 6ft apart and are following the social distancing guidelines as indicated by markings on the floor



ATTENDANCE

Good attendance is important for the child's success.

- When students **are in the school building** their teachers will take period attendance in pupil path and the official attendance will be placed in Stars Classroom.
 - IF YOUR CHILD IS NOT FEELING WELL, THEY MUST STAY HOME!!!!
- When the child is **learning from home** students **MUST**:
 - Attend and participate in all live Google Meets each period for the teacher to mark your child present.

HOW IS LEARNING PRIORITIZED DURING IN PERSON INSTRUCTION?

- Students will have instruction in ELA, Math, Social Studies and Science while in school
- All students will have Physical Education, Enrichment, Language (Spanish or Italian) and Advisory (Social Emotional Learning)
- Teachers will focus on meeting individual students needs and small group instruction
- Students will have an instructional lunch

CURRICULUM AND THE BLENDED LEARNING PROGRAM

- The amount of SYNCHRONOUS (LIVE) instruction varies by grade based on the Chancellor's recommendations
- When students are learning from home they will see a staff member who may not necessarily be their teacher (in person teacher)
- We are using the teaming approach so all teachers are planning together and staying on similar pace no matter if they are in school or learning remotely
- Students will meet with teachers in small groups throughout the week

LEARNING ONLINE!

NYC DOE is offering tutorials for parents and students to learn about the different technology platforms that we are using!

Visit Student/Parent Tutorials

https://docs.google.com/spreadsheets/d/1_S9A45vTRArvGC7OUwfCzEwRgNRUypjLNIX9vO8_MOs/htmlview?usp=sharing&pru=AAABdGkNqzA*bQdc2FcyYZUZByMIPHMj9g

If you require a device for remote learning, please visit:

<https://www.schools.nyc.gov/learning/learn-at-home/technical-tools-and-support/ipad-requests>

Troubleshooting Technology Issues:

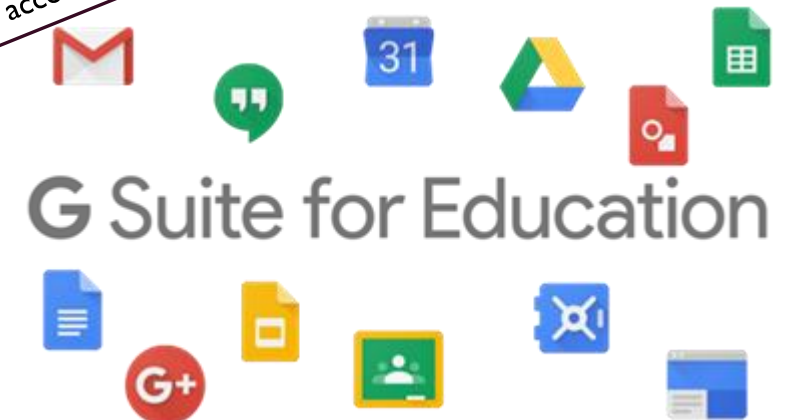
- Lost password/trouble accessing a website? Reach out to your child's teacher first!
- If you are having issues with your school issued technology, please visit and complete form:

https://docs.google.com/forms/d/e/1FAIpQLScxoZcptOr4Hbis-RUex2lWaqNo3w6n8Afg2fYy_U-LEznIA/viewform

When blended students are working remotely from home, they will log into Google Classroom to complete their asynchronous lesson and assignments



George L Egbert Intermediate School I.S. 2 uses a G Suite Domaine. Each student has an @is2Egbert.org Gmail account.



COMMUNICATION



PupilPath and School Messenger is how we will communicate and stay up to date with our families on important information!

The PupilPath logo, consisting of the word "PupilPath" in a large white sans-serif font, with "by i@ education" in a smaller white sans-serif font below it, all set against a solid blue square background.

SOCIAL EMOTIONAL LEARNING IS A PRIORITY AT EGBERT

We will be using Sanford Harmony and Restorative Circles to drive our Social Emotional Learning

SANFORD
HARMONY[™]
AT
NATIONAL UNIVERSITY



Warm and welcoming environment – virtually and in person.
These times are experienced differently for all and especially to our students. We will make them feel welcome everyday.

Covid-19 Conversations will be taking place so students may share their feelings.



Restorative Circles



FINAL THOUGHTS

- Don't forget your health screening
- Please contact the main office to update your contact information
- Supplies need to be brought to school everyday
 - Teachers will tell the students what to bring to school.
 - Students will NOT be allowed to share supplies or food to ensure the safety of every child.
 - Cohort tags will be distributed on the first day and are to be worn to school everyday
 - Follow the arrival and dismissal plan for drop off and pick up



Thank you families of the George L Egbert Intermediate School I.S. 2 for your support and patience! If you have any additional questions or concerns about anything please reach out to us via email, Pupil Path or call us at 718-987-5336!